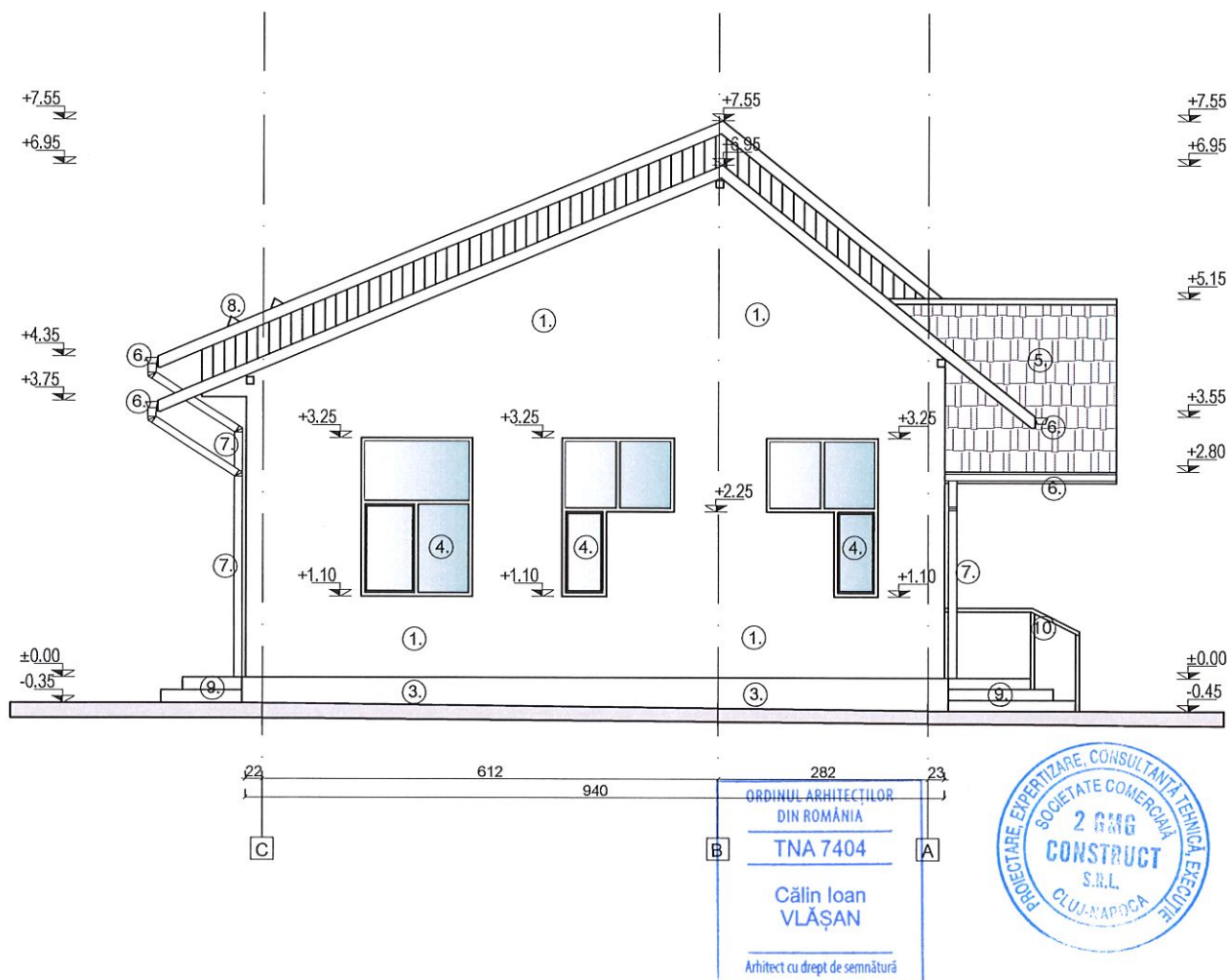


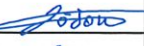
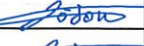



LEGENDA:

- ① Tencuiala driscuita de exterior culoare alb
- ② Tencuiala driscuita de exterior culoare bej
- ③ Soclu - Tencuiala driscuita de exterior culoare bej
- ④ Tamplarie din PVC
- ⑤ Invelitoare din tabla metalica ondulata
- ⑥ Jgheab metalic
- ⑦ Burlan metalic
- ⑧ Parazapezi
- ⑨ Scara exteriora din beton
- ⑩ Balustrada metalica
- ⑪ Copertina din beton
- ⑫ Rampa pentru persoane cu dizabilitati
- ⑬ Scari exteriora de acces in pot din metal
- ⑭ Stalp metalic



ACEST DESEN ESTE PROPRIETATEA INTELECTUALA A SC 2 GMG CONSTRUCT SRL						
REPRODUCEREA POATE FI FACUTA NUMAI CU ACORDUL SI IN CONDITIILE STABILITE DE SC 2 GMG CONSTRUCT SRL						
Verificator/Expert	Nume	Semnatura	Cerinta	Referat nr./ Expertiza Nr./ Data		
<div>PROIECTANT GENERAL:</div> <div><div></div><div>S.C. 2 GMG CONSTRUCT S.R.L. CLUJ-NAPOCA, STR. GH. DIMA, NR.38A/34, JUD. CLUJ J12293/2007, CUI: RO20713550 Tel. 07401196768, E-mail: informatiibrou@yahoo.ro</div></div>				<div>Titlu proiect: MODERNIZAREA SI DOTAREA CENTRULUI DE ZI PENTRU PERSOANE ADULTE CU DIZABILITATI PITESTI</div> <div>Amplasament: Loc. Pitesti, Bdul. Petrochimistilor, nr. 18, Jud. Arges</div>		<div>Proiect: 06/2024</div>
<div>PROIECTANT DE SPECIALITATE:</div> <div><div></div><div>S.C. 2 GMG CONSTRUCT S.R.L. CLUJ-NAPOCA, STR. GH. DIMA, NR.38A/34, JUD. CLUJ J12293/2007, CUI: RO20713550 Tel. 07401196768, E-mail: informatiibrou@yahoo.ro</div></div>						
	NUME	SEMNTATURA	Scara:	Beneficiar:	Faza:	
SEF PROIECT	arh. Vlasan C.		1:100	DGASPC ARGES	D.A.L.I.	
PROIECTAT	arh. Vlasan C.		Data:	FATADA SUD-VEST - CORP C1 - EXISTENT	Plansa: A.08	
DESENAT	arh. Vlasan C.		2024			